

REPORT TITLE: COMMUNITY SAFETY PARTNERSHIP PERFORMANCE REVIEW

THE OVERVIEW AND SCRUTINY COMMITTEE

23 JANUARY 2017

PORTFOLIO HOLDER: Councillor Frank Pearson, Portfolio Holder for Environment, Health & Wellbeing

REPORT OF HEAD OF COMMUNITY SAFETY & NEIGHBOURHOOD SERVICES

Contact Officer: Sandra Tuddenham Tel No: 01962 848132 Email studdenham@winchester.gov.uk

WARD(S): GENERAL

PURPOSE

For the purpose of Section 19 of the Police and Justice Act 2006, this Committee acts as the Council's Crime and Disorder Committee and as such is responsible for reviewing and scrutinising the decisions and work of the Community Safety Partnership (CSP).

This report provides an update on the progress made by the Partnership against the priorities and actions included in the Community Safety Partnership (CSP) Delivery Plan over the period 1 April 2016 to 30 September 2016. Representatives from Hampshire Constabulary, Hampshire Fire & Rescue Service and the Winchester Street Pastor Scheme will be present at the meeting to provide Members with an update of their organisational activity and to respond to questions raised by the Committee in relation to this report.

RECOMMENDATIONS:

That the Committee considers whether there are any matters of significance it wants to draw to the attention of the Portfolio Holder for Environment, Health & Wellbeing or Cabinet.

IMPLICATIONS:

1 COMMUNITY STRATEGY OUTCOME

- 1.1 Delivers against the City Council's statutory duty in relation to the Crime and Disorder Act 1998 and the subsequent review/updated guidance documents. It also supports the implementation of the Community Strategy Active Communities outcome (Ensure our communities are healthy and safe and Promote community cohesion).
- 1.2 The development and delivery of a Community Safety Partnership Strategy within the period 2016-2017 is a priority action within the Portfolio Holder Delivery Plan 2016/17 for Environment, Health & Wellbeing.

2 FINANCIAL IMPLICATIONS

- 2.1 Against a net direct budget of £263,000 for 2015/16, the outturn for the Community Safety Team was £255,000, which shows a small underspend of £8,000. Out of this underspend, £3,500 of budget was brought forward into 2016/17 for delivery of the Prevent (anti-radicalisation) agenda.

3 LEGAL AND PROCUREMENT IMPLICATIONS

- 4 Under Section 19 of the Police and Justice Act 2006, the Council is required to have a "Crime and Disorder Committee" with power to review or scrutinise decisions made and other action taken in connection with the discharge by the responsible authorities (which include the City and County Councils, probation, police, fire and rescue, and clinical commissioning group). The Committee is also required to have to power to make reports and recommendations to the County and City Councils with regard to the discharge of those functions. A Member of the Council must be able to have a local crime and disorder matter placed on the agenda of the Committee. As the City Council operates executive arrangements (with a Cabinet), the Committee must be an overview and scrutiny committee.

5 WORKFORCE IMPLICATIONS

- 5.1 None.

6 PROPERTY AND ASSET IMPLICATIONS

- 6.1 None.

7 CONSULTATION AND EQUALITY IMPACT ASSESSMENT

- 7.1 Development of the Community Safety Strategy is completed in consultation.

8 RISK MANAGEMENT

Risk	Mitigation	Opportunities
<i>Property - None</i>		
<i>Community Support – Insufficient staff resource to cover the priority areas of the Town Forum.</i>	Ensure that staffing levels are set at a minimum of 3 wherever possible to cover core hours.	
<i>Timescales - None</i>		
<i>Project capacity - None</i>		
<i>Financial / VfM - None</i>		
<i>Legal</i> Statutory duty to deliver against the Crime and Disorder Act 1998, Counter Terrorism & Security Act 2015 and the ASB, Police & Crime Act 2014.	Ensure that appropriate staff resources are in place to deliver against the duty.	
<i>Innovation N/A</i>		
<i>Reputation N/A</i>		
<i>Other</i>		

9 SUPPORTING INFORMATION:

9.1 Introduction

- 9.2 For the purpose of Section 19 of the Police and Justice Act 2006, this Committee acts as the Council's Crime and Disorder Committee and as such is responsible for reviewing and scrutinising the decisions and work of the Community Safety Partnership.
- 9.3 The Committee is asked to consider this report as part of its role as the Council's Crime and Disorder Committee.
- 9.4 This Report forms part of the regular performance and financial monitoring processes designed to check progress in delivering the Council's key objectives and performance against identified indicators.
- 9.5 The information provided in **Appendix 1** of the report gives an update on the progress against the actions and objectives included in the Community Safety Delivery Plan and broadly cover the period 1 April 2016 to 30 September 2016.
- 9.6 The data in **Appendix 2** is drawn from the Police Performance Management Team. The information provided is based on the individual Police Neighbourhood Patrolling Teams geographical areas.

9.7 Winchester District Police Commander Chief Inspector Claire Taylor, along with other statutory partners, will be in attendance to respond to Committee Members' questions.

9.8 Community Safety Partnership Delivery Plan 2016/17 - Performance Update

9.9 The Community Safety Delivery Plan for 2016/17 is divided into three priority areas, directly linked to those of the Police & Crime Commissioner. They are:

1. **People** – Endeavour to protect victims and vulnerable people¹ from crime, disorder and harm².
2. **Partnership** – Work together to keep communities safe, reduce crime, disorder and Anti-Social Behaviour (ASB).
3. **Community Impact** – Offending Behaviour, Extremism/Radicalisation³ and Rural issues.

9.10 During the last year the CSP has put in place a number of successful Crime & Disorder reduction initiatives/operations. Examples are listed below:

Actively supported a partnership operation with Immigration (Compliance and Enforcement) and the Multi-Agency Public Protection Arrangement (MAPPA) team which led to the detainment of one individual.

Signed off a Closure Order against a tenant for allowing the use of their premise for dealing class A drugs.

Responded to a number of ASB issues flagged by Ward Councillors in hot spot locations e.g. Hyde Gate Area, Water Lane and Colden Common.

Undertook 3 police and partner operations (Operation Helicon) aimed at engaging rough sleepers with support services. Contact included those who had come to the attention of the partnership because of their anti-social behaviour, environmental or street crimes⁴.

Provided support to medium and high risk victims of anti-social behaviour using ASB4 referral processes, **3** medium and **2** high risk victims⁵

Sent ASB warning letters to **3** young people related to their behaviour.

¹ Vulnerability – is used in the Community Safety context to describe a range of issues related to socioeconomic factors that may be linked to risk or exploitation e.g. homelessness, family breakdown, domestic abuse, substance dependency, mental health, age.

² Modern Slavery Act 2015 – safeguarding issues related to trafficking, child sexual exploitation www.gov.uk/government/collections/modern-slavery-bill.

³ Counter Terrorism & Security Act (Prevent) – The core principle of Prevent is to tackle all forms of terrorism and extremism. Prevent is based on a multi-agency strategy aimed at stopping people becoming terrorists, by challenging the spread of ideology, supporting vulnerable individuals and working in key sectors and institutions. www.gov.uk/government/publications/prevent-duty-guidance.

⁴ Operation Helicon – After each operation a case conference is held to review the housing and support options available to those we have come across during the partnership operation.

⁵ ASB4 – is a risk assessment tool to ensure appropriate measures are in place to support individual need.

Put in place 1 adult Acceptable Behaviour Contract (ABC) which was not signed, resulting in the perpetrator receiving a Criminal Behaviour Order.

Obtained in conjunction with the local police neighbourhood teams, a Criminal Behaviour Order related to ASB.

Received 56 online reporting forms⁶; of those 2 were unknown locations, 1 was left blank, 32 related to rural areas and 21 were city-specific.

Used Section 35 Dispersal Orders⁷ to deal with alcohol related ASB in **3** specific areas (Abbey Gardens, St Bartholomew church yard and the City Centre).

- 9.11 The Neighbourhood Service (NSO) Team actively supports the work of the CSP. However it is important to note that their core business remains with the provision of a service to communities within specific geographical areas.
- 9.12 The various roles within the Neighbourhood Service team⁸ continue to evolve. They are regularly being asked to support other services within the Council but still maintain responsibility within their specific Geographical areas, examples of their work being listed below:

Supported Planning Enforcement - undertook **6** site visits on behalf of the Council's planning enforcement team to gather information regarding alleged breaches of planning control.

Provided support to WCC Licensing team in relation to **16** of their cases e.g. site visits, photographs.

Undertake regular inspections in relation to weekly checks (**4** sites) and monthly checks (**20** sites) on behalf the Landscape & Open Spaces Team (LOST). In addition to the regular checks the team have undertaken a further **15** visits on behalf of LOST e.g. checked contract works have been completed, undertaken an additional site visit to the skate park.

Served tent removal notices in relation to **3** separate illegal encampments.

Placed 8 abandoned notices on bicycles around the City – acting on behalf of Engineering and Transport Team.

Attended - 154 abandoned vehicle locations on behalf of the Business Support Team to provide an audit trail of activity e.g. photos, notices as appropriate.

⁶ Online ASB reporting forms - online forms come into the Council from members of the public reporting a range of issues such as noise, alcohol or drug related ASB. The report can be dealt with in a variety of ways which is dependent on the request of the complainant and the nature of the report e.g. maybe sent onto an external/internal service or could be for information only.

⁷ Section 35 – A notice to disperse from a specific area for up to 48hrs if authorised by a police inspector or above for alcohol/drug related ASB, lighting fires, illegal raves etc.

⁸ Neighbourhood Services – Each Officer works within a specific geographical area as well as taking responsibility for a specialist role within the team e.g. ASB, HMO's, Fly Tip Enforcement, City Centre and Rural Locations.

- 9.13 An example of the NSO Team's other activity during the last 12 months is listed below:

Investigated 35 fly tip cases – of those **25** resulted in no further action⁹, WCC issued **1** fixed penalty notice, **3** prosecutions are pending court attendance, **1** awaiting sentence at Crown Court and **1** case has been deferred due to the fact that the alleged perpetrator is now detained in prison for another offence. Warning letters have not been used this year because all cases where sufficient evidence exists to take action have progressed to prosecution. There are currently **4** cases still open and they are subject to further investigation.

Achieved 2 successful prosecutions for fly tipping incidents, both in the same location in Swanmore.

Issued 1 fixed penalty notice for littering and **1** for cycling on a footpath¹⁰

Cleared and given out notices to **3** illegal encampments around the City.

Maintained a visible presence in conjunction with the police and other agencies in hot spot locations for ASB e.g. City Car parks, City Centre (Kings Walk, Water Lane and Abbey Gardens).

Organised Community engagement opportunities e.g. Party in the Park, work within schools.

Supported student focused activity during Fresher's week (Universities of Winchester and Southampton) and within the first two weeks of the new academic year. Local Councillors in conjunction with the Neighbourhood Services Team and the University rolled out the 'welcome to the neighbourhood' scheme by knocking on every door and delivering a 'welcome booklet' to student properties in Stanmore and Winnall¹¹.

Published updates/information - on Twitter, the City Council reception screen and press releases related to campaigns and other community safety related information within this reporting period e.g. fly tip successes, White Ribbon Campaign.

Attended resident groups/forums across the district and undertook a number of environment walkabouts with Ward Cllrs, Hants Fire & Rescue and other community representatives, housing street meets, PACT meetings and Beat Surgeries.

Assisted WCC Environment Protection Officers at major Winchester Events e.g. BoomTown.

⁹ No further action – evidential information against an individual/organisation needs to be found/photographed in situ before officers can progress to investigation.

¹⁰ Cycling on a footpath – FPNs can only be issued by an officer if the footpath is adjacent to a highway so this precludes the pedestrian area of a high street.

¹¹ Welcome to the Neighbourhood Booklet – link <http://www.winchester.gov.uk/community/neighbourhood-services/welcome-winchester-student-information/>

In short, the Neighbourhood Service Team delivers against a wide scope of activity in order to support the City Council in its drive to provide an efficient and effective service. A proportion of that work also helps to discharge the crime & disorder reduction duty placed on local authorities and statutory partners.

10 OTHER OPTIONS CONSIDERED AND REJECTED

10.1 Not applicable.

BACKGROUND DOCUMENTS:-

Previous Committee Reports:-

OS135 – Overview & Scrutiny Committee 7 December 2015

Other Background Documents:-

Winchester Community Safety Partnership Annual Delivery Plan 2016

Winchester Community Safety Partnership Strategic Assessment 2016

See below a link to the strategic assessment and delivery plan documents
<http://www.winchester.gov.uk/community/neighbourhood-services/winchester-community-safety-partnership/current-csp-strategy/>.

APPENDICES:

Appendix 1- Progress against Community Safety Delivery Plan 2016/17.

Appendix 2 - Police Performance Management Team Data.

COMMUNITY SAFETY DELIVERY PLAN – PROGRESS REVIEW

Introduction

Winchester Community Safety Partnership (CSP) strives to build upon a very strong partnership ethos.

The CSP recognises the importance of partnership working, especially in times where both internal and external change is inevitable and the economic climate is still challenging. As a partnership we have accepted the fact that we cannot rely on external funding bids to deliver against our priorities; instead we try and focus our efforts on identifying partners who can support the delivery of priority themes by utilising current resources.

The following information is an example of some of the partnership work the CSP has undertaken during the last year.

Target Outcomes: People – Endeavour to protect victims and vulnerable people from crime, disorder and harm.
The CSP recognises the significance of supporting those who have unfortunately become a victim of crime, disorder or harm. However it is equally important to put in place activity that reduces the risk associated with vulnerability which can often increase the potential of someone becoming a victim or perpetrator of crime, disorder or harm ¹ .
Outcomes Achieved:
<p>Hampshire Constabulary</p> <p>Deliver Against the Domestic Abuse Improvement Plan</p> <ul style="list-style-type: none"> • All victims of a domestic incident or crime where the risk to the victim is graded as Medium have contact within 72 hours of the incident occurring. During this process the officer or PCSO will provide additional safeguarding advice and support to the victim to assist in keeping them safe from further abuse. This will include signposting to external service providers. There has been a 12.5% increase in calls for service in this area of business. • Over the last few months we have started to devise a list of the top 10 perpetrators of Domestic Abuse (DA) and we are working through a process of how this cohort of offenders will be managed. This will include partnership working with providers of perpetrator programmes and with our Integrated Offender Management team to ensure a greater understanding of the needs and motivators for that offender.

¹ Vulnerability – is used in the Community Safety context to describe a range of issues related to socioeconomic factors that may be linked to risk or exploitation e.g. homelessness, family breakdown, domestic abuse, substance dependency, mental health, age.

- Domestic Abuse continues to be a Force priority and part of the improvement plan was to change the arrest Policy. This has now been embedded for 4 months and we have started to see an upturn of positive outcomes. This also supports the use of other outcomes such as use of the Domestic Abuse Prevention Notice and orders.

Continue to ensure that safeguarding is at the forefront of everything we do e.g. Multi-Agency Risk Assessment Conference (MARAC)

- Neighbourhood Police Teams (NPTs) will attend the MARAC where either the victim or the perpetrator are being tracked through other internal processes e.g. Vulnerability tracker for victims and the Top 10 for DA perpetrators. All Medium risk victims have contact and officers discuss any safeguarding concerns. New approach from Hampshire Police is that Safeguarding is everyone responsibility.
- Continue to Support the force wide Operation Makesafe in order to further develop the intelligence and information the Constabulary receives about Child Sexual Exploitation (CSE).

Take enforcement action against perpetrators of Serious Sexual Offences and Sexual Exploitation

- NPT within Winchester works closely with our dedicated Child Sexual exploitation team Operation Goldstone in identifying the most vulnerable within the Policing area. We build comprehensive plans to keep them safer and to reduce their risk of being exploited. Where the victim of a Serious Sexual Offence is engaging we will always take enforcement action against perpetrators. With regards to Child victims we will use all available resources including Child Abduction Warning notices. With regards to other sexual exploitation such as prostitution the intelligence with regards to this type of offence within Winchester is very limited. Therefore we have not seen any enforcement action in this area.

Ensure that Neighbourhood policing teams are fully aware of the most vulnerable victims within their policing area and work in partnership with others to provide appropriate support or remedial action

- Winchester NPT work closely with other partner agencies to identify who is the most vulnerable within the community. This is achieved through attendance at partnership meetings such as the OVAL (Offender, Victim and Location) and Operation Fortress².

² OVAL and Op Fortress – OVAL addresses quality of life issues such as ASB and the Op fortress meeting addresses concerns around drug supply within the City. All activity is updated and logged onto the partnership IT interface known as Safetynet. This allows partners to see what activity each of them is undertaking to address the relevant issues, and it also provides a data base of information on which further decisions can be made.

Tackle drug supply and drug related offences by actively targeting those who deal drugs, and those premises that have been used to deal drugs

- Over the last 12 months there have been several operations led by the Police to tackle the supply of drugs within the City and the issue of County lines.³ Again there is a good partnership approach to this issue and statutory and voluntary partners attend the Op Fortress meeting to assist at all stages from enforcement through to support services for both victims and users.

Continue to refer families through the Supporting Families Programme where domestic abuse, criminal activity and safeguarding issues are present

- Neighbourhood Policing teams continue to make appropriate referrals.

Government Legislation

- The Prevent duty and its requirement on local authorities to discharge those duties, is in place. Prevent has been incorporated within the City Council's safeguarding policy and E-Learning around Channel Awareness is also rolled out. It is an expectation that all new employees will undertake relevant Prevent training as part of the corporate induction process.
- The Community Safety Team has taken a lead role in responding to audit returns to both the Home Office and the Hampshire Prevent Board. The most recent organisational self assessment tool sent to WCC by the Prevent Board showed that WCC has achieved **24** Greens, **5** Ambers and **0** Reds which means we are on track in terms of our performance and in some cases, in advance of other local authorities Prevent delivery.

Winchester Probation and Integrated Offender Management (IOM) teams

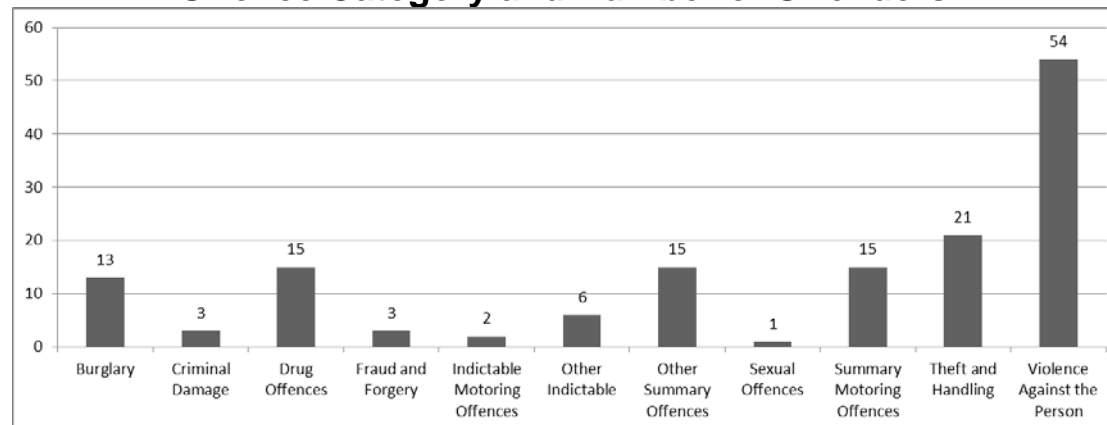
- We will identify the impact of offending on victims of each offence and include awareness work in all supervision plans with service users.
- Continue our work to develop strategies for addressing and responding to all offending including recognising the impact of public order and

³ Police Drug Operations – Where young people (YP) are being used to travel into areas outside of the London boroughs and supply drugs over a number of hours or days. They then return to London with the proceeds of those sales. These are young people vulnerable to the risk of violence, exploitation, domestic abuse and sexual violence. When enforcement action is taken and these YP are dealt with by the Police they ensure that partner agencies within the County origin are linked in and appropriate safeguarding is put in place. The police use all appropriate legislation to assist in the enforcement and protection of vulnerable people in this scenario, including ASB Closure Orders, and other housing legislation.

acquisitive offending through individual work, Community Payback and developing our restorative justice work.

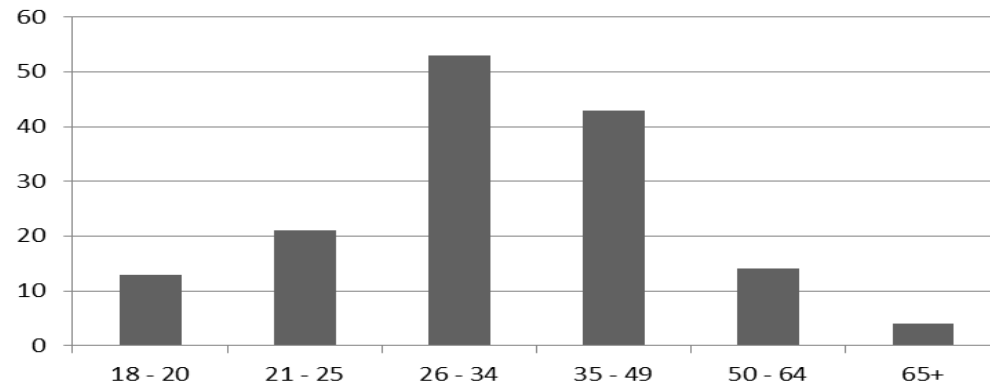
- Engage with service users in their community through our local reporting Centres, About Turn Projects and Service user councils to encourage positive engagement with local services, improved lifestyles, and reduce the risk of further offending.
- Continue to support Safeguarding processes such as MASH and MARAC by making referrals and attending associated meetings.
- Continue to refer to Supporting Families projects where Domestic Violence, safeguarding and offending issues are present.
- Engage with Adult and Child Safeguarding agencies to develop joint plans to safeguard vulnerable members of the community through one to one work and risk assessments.
- Commit to continued training of all staff in Child and Adult Safeguarding processes and updates to ensure all safeguarding concerns are referred to the appropriate agency.
- Continue to support educational work with offenders aimed at targeting attitudes surrounding domestic abuse, sexual exploitation and racial abuse
- Continue to deliver programmes such as Building Better Relationships and Thinking Skills programme aimed at reducing offending in Domestic Abuse cases and general offending.
- Use robust licence conditions, and order requirements to protect victims through prohibiting contact or preventing offenders from entering areas where individuals have been victims of offending or antisocial behaviour. In the case of non-compliance with these conditions we will continue to address any breaches of these conditions through a return to court or custody where appropriate to protect victims.

Offence Category and Number of Offenders⁴

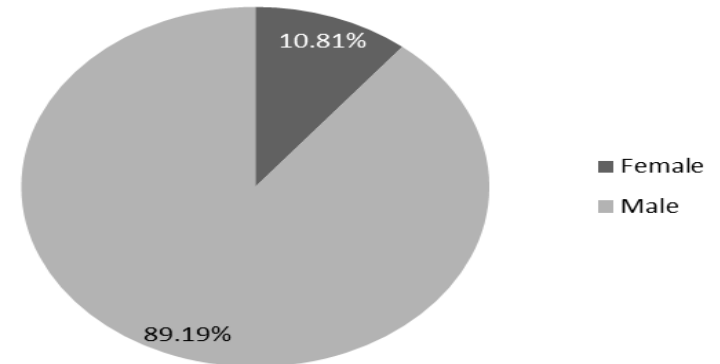


⁴ Figures relate to offenders serving community sentences during the second quarter 2016. Offenders are included if they have had an assessment completed during the reporting period. For each offender, the most recent assessment during the time period is chosen.

Age of Offenders



Gender percentage



Hampshire Fire & Rescue Service⁵

- Overall **incidents attended up by 10% to 493** - reflecting a rise in false alarms (unwanted fire signals) and the partnership with South Central Ambulance Service to affect forced entry.
- 18 fewer fire incidents (@102) and slight decrease in road traffic collisions.
- 180 Co Responder calls attended
- 319 safe and well visits completed to vulnerable elderly residents focussing on fire safety and falls prevention.

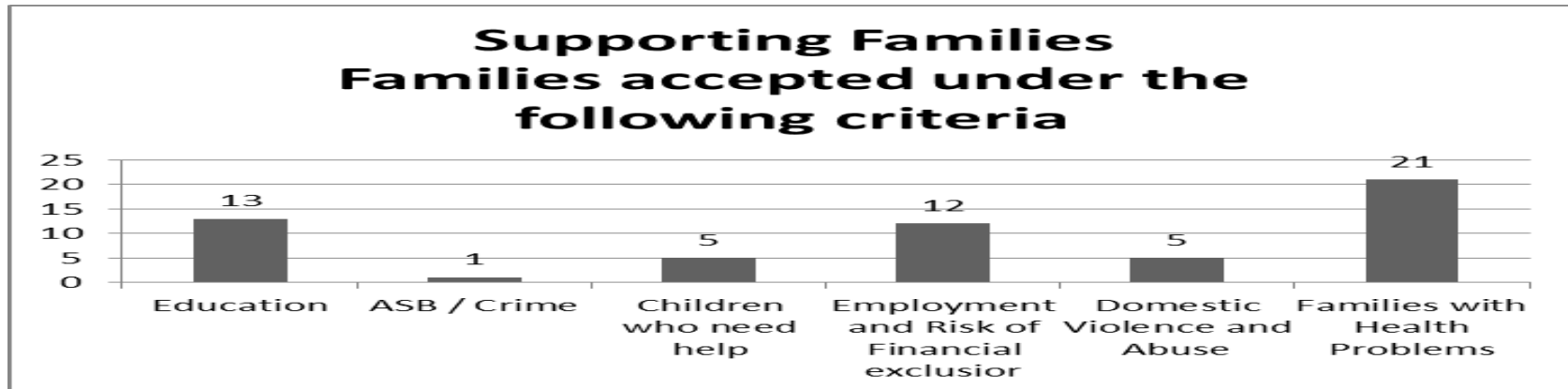
Winchester Military Garrison

- The Military Garrison continues to work alongside the Army Welfare Service, the Supporting Families Programme, and the Royal British Legion and 3rd sector partners to secure positive outcomes for vulnerable people.

⁵ Performance data – first 6months (April – October 2016).

Supporting Families

A mid year report has been reviewed at a recent Scrutiny Committee – a copy of the performance report can be found on the City Council's website - <http://www.winchester.gov.uk/community/health-wellbeing/supporting-families-winchester-district/>.



West Hampshire Clinical Commissioning Groups

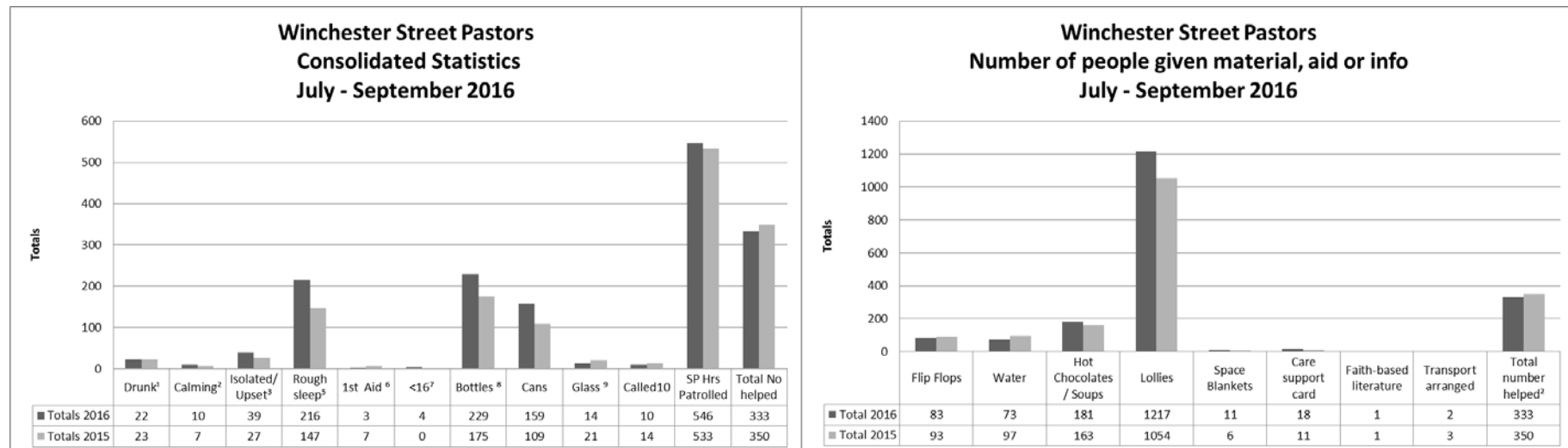
West Hampshire CCG commissions a range of mental health services for adults, many of these services are provided by Southern Health Foundation Trust (SHFT), Solent Mind, Andover Mind and Alzheimer's Society.

- SHFT provided the italk service in partnership with Solent Mind, which offers talking therapies for people with anxiety and depression. For the period April 2016 to September 2016 in West Hampshire the italk service received 3,923 referrals for psychological therapies, of this number 3,265 people decided they would like to enter therapy with the service to date. Of the people who decided to take up treatment 2,912 entered their first session of treatment. Over the whole six months 1,766 were discharged from treatment, the recovery rate was 52% with 62% of people using the service showing reliable improvement
- Working age services provided by SHFT in the West Hampshire division in the period April 2016 to September 2016, roughly 348 referrals a month were made to the service and 33,616 community contacts with people with mental health needs were provided. Inpatient bed days provided for working age people totalled 7,844 in this period. Roughly 192 referrals a month were received in the services provided for older people with mental health needs and 17,540 community contacts were provided. Inpatient beds days provided for older adults totalled 6,345.

- West Hampshire CCG leads a multi-stakeholder planning group for working age mental health services, with the key responsibility of implementing the joint NHS and Hampshire County Council mental health strategy. The development of the well-being centres is amongst the responsibilities of this group, as well as ensuring carers and people who use services are involved in the work to improve outcomes for working age adults with mental health needs. Improvements in this area include the launch of a new pathway for people diagnosed with a Borderline Personality Disorder. People experiencing their first episode of psychosis now receive an assessment and support within 2 weeks, if there is not an emergency situation. For people who are unwell and find themselves frequently at crisis point, emergency services and mental health services have established a group to plan how to support these individuals. The CCG has agreed to extend its contribution to the funding of the Wellbeing Centres for a further five years.
- West Hampshire CCG also chairs the strategy implementation group to improve outcomes for older people with mental health needs, including dementia. Across West Hampshire referrals to dementia advisers rose by just under 20%. This means around 65 people affected by dementia in the Winchester area are receiving support to deal with dementia. Around 55% of practices across Hampshire are working on becoming dementia friendly along with the CCG. For other older people with mental health needs services are being redesigned to offer a more personalised service. Inpatient units for adults do not discharge people just because they become 65; patients are now cared for and supported by the unit with the best mix of clinical skills.

Street Pastors

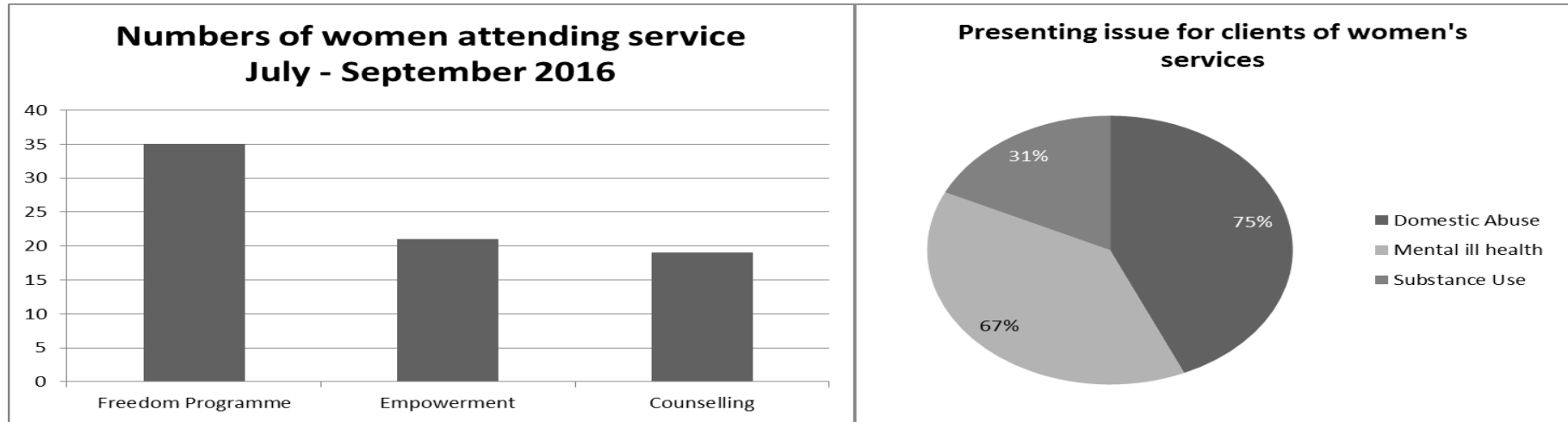
- The information below outlines the activity undertaken by the Street Pastor scheme within the reporting period⁶. In addition to the charts below the scheme reports that they undertook 546 patrols in 2016 and 533 within the same period 2015.



⁶ 1. Number of drunken people who needed some form of assistance. 2. Number of aggressive situations where street pastors intervened to calm things down. 3. Number of isolated/upset (therefore vulnerable) vulnerable people assisted to locate their friends or assisted to get home. 4. Number of injured or unwell people given assistance (Includes help given cleaning up vomit). 5. Number of contacts with people apparently sleeping rough. 6. 1st Aid given. 7. Persons under 16 sighted in city centre and reported to police where relevant. 8. Bottles or glasses picked up from the street. Does not include broken glass swept up. 9. Number of times broken glass was swept up. 10. Number of times called to assist by CCTV, Door Staff, Police or member of the public, using radio, voice or our mobile phone.

Women's Service

The Women's service offers support to survivors of domestic abuse in the form of the Freedom Programme and a weekly drop-in peer group. The information in the graphs below show service provision.



Trinity and Spurgeon's at HMP Winchester - Positive Relationships course pilot⁷

- A total of four courses were held; each course equated to four sessions, run over a two week period.

⁷ The positive relationships course is run in partnership with Trinity Winchester and Spurgeon's Invisible Walls Project, based within Winchester Prison. The course is designed to allow the client group to speak freely about previous or present relationships and behaviours. The aim of each discussion was always to focus on what could be different so as not to judge or dwell on the negatives but to offer practical and realistic solutions and alternatives. Trinity will also be facilitating the Positive Relationships course within the community, following the award of an innovation grant from Purple Futures. This is specifically aimed at clients referred via Hampshire Probation; the programme will run from Trinity's drop-in service at Bradbury House. Future courses with Spurgeon's are in the pipeline.

- The client group were fathers who had previously participated in the “Time for you and your Child” course.
- There were 32 participants at the course and of those, 30 completed.

YOU Trust

- Continue to roll out the Freedom Programme / Recovery toolkit.
- A total of 444 referrals were received for recovery groups⁸ across the West of the district during the reporting period.
- HCC have set a target of 60% regarding move on from a refuge within 12 weeks. You have averaged 67%.
- You First continue to deliver awareness sessions for young people in the Winchester area and have worked with over 1700 young people across the West of the district in the last two quarters.
- You First delivered group awareness of Domestic Violence to Children attending the Wickham Festival and continue to attend Hampshire Fit Fest events.
- The You First CYPDAA (Children and Young Persons Domestic Abuse Advocate) worker has been delivering one to one sessions⁹ with young people who have been referred for specialist support after experiencing or witnessing Domestic Abuse.
- A FIT (Family Intervention Team) worker has been working alongside Winchester and Eastleigh Child In Need teams to support domestic abuse awareness raising and put in place interventions to keep children safe¹⁰.

⁸ Recovery groups are rolled out across all You First areas. Freedom Programme and Recovery Toolkit are the groups of choice. Groups are run in the community and within refuge accommodation. Recovery toolkit is designed for people who are no longer living with a perpetrator and have had some support to come to terms with their experiences of domestic abuse.

⁹ One to One Sessions comprise of awareness, age appropriate talking and play therapies, positive role modelling and signposting for additional support and activities to enrich life.

¹⁰ FIT as it is now will be coming to an end in 2017. Alternatives to the current model are being explored. This is being led by Children’s Services.

Target Outcomes: Partnership – Work together to keep our communities safe, reduce crime, disorder and anti-social behaviour

With a strong partnership ethos, Winchester CSP continues to expand working arrangements with external groups and forums at a local level and where appropriate across authority boundaries. This is particularly pertinent when it comes to the year on year reductions we have shown in relation to ASB and could be attributed to the increasing number of organisations choosing to work together to achieve their reduction outcomes.

Outcomes Achieved:

Hampshire Constabulary

Improve Customer Satisfaction¹¹

- Over the last rolling 12 months (October 2015-Sept 2016) Winchester has achieved a satisfaction rate of 82 % this is the highest in Force alongside East Hants District. Compared to the same period last year we had a satisfaction rate of 79% so this is an improved position.
- Utilise information and intelligence to actively target those areas or individuals of concern
- Put in place or support crime and ASB reduction operations e.g. rural crime, burglary, diversionary activity
- Take robust action against those residents whereby their premise is causing nuisance or disorder e.g. drug/alcohol related Closure Orders
- Utilise the tools and powers available to our Neighbourhood teams in relation to the Anti-Social Behaviour, Police & Crime Act 2014 e.g. Criminal Behaviour Orders, Community Protection Notice, Closure powers.

¹¹ Improve Customer Satisfaction – The police work closely with partners to identify areas of concern and actively share information through various forums to ensure that their intelligence and information is as up to date as it can be. A variety of information has been used to actively target those areas and individuals that cause the greatest Threat Harm and Risk to the District. Successes have included the closure of the Head High shop on Stockbridge Road, which was closed using ASB legislation, working with support agencies to provide assistance for those who could not get access to substances but also to try and reduce the impact the related ASB can have on the wider community. In partnership the police have also achieved closures of other properties or evictions of residents using ASB legislation. They carry out joint patrols with WCC Community officers and housing under the Operation Helicon banner to address the ASB and associated issues with those who are homeless within the District which enables us to keep up to date with who is living in the area. In the rural areas the police have used previous intelligence to provide a research and analysis document that supported a more intelligence led response to this year's poaching season. The District Commander Ch. Insp. Taylor has also hosted two rural crime engagement evenings for the gamekeepers and landowners to update them on the priorities for the Force and provide crime prevention advice. The police utilise specialist teams within their own organisation and partners to try and tackle issues related to Modern Day Slavery. There is further activity planned within this area.

Integrated Offender Management (IOM)¹²

To reduce the level and impact of crime and anti-social behaviour on Winchester communities CRC will:

- Continue to lead in the work of the IOM team locally. Within a multiagency team including police, substance misuse services and probation, we will contribute to the delivery of an enhanced service targeting and supporting individuals who are identified as high risk of offending and causing significant disruption in communities.
- Continue to engage with local agencies and police through the PPO scheme to identify and address the issues of greatest impact on the community and support those individuals identified to desist from crime and engage in pro-social activities in their local area
- Continue to develop and support local information sharing protocols to support a multiagency approach to addressing offending in Winchester and appropriate sharing of risk information.
- Continue to attend or provide written representation at local partnership meetings aimed at domestic Violence homelessness, community safety, Drugs and drug related violence and improved health services locally.
- Continue to provide individual and group work programmes aimed at addressing offending behaviour, Substance misuse issues and general thinking skills
- Continue to work with Service Users to identify the local resources available to them and actively encourage them to engage with these services. This will be achieved through including these in sentence plans through the use of the rehabilitation activity days, the use of mentors and the introduction of volunteers and ex-service users to provide peer mentoring and encourage engagement.
- Deliver Cognitive behavioural sessions and educational work aimed at reducing antisocial behaviour, Substance misuse and offending.

Hampshire Fire & Rescue Service

- Offered **25** school Environmental Visual Audit's, but a low **take up of only 8**
- Completed **42 Site specific risk information plans** to improve effective incident resolution and firefighter safety completed.

OVAL Group

The following information provides an overview of the work undertaken by the multi-agency group within the reporting period:

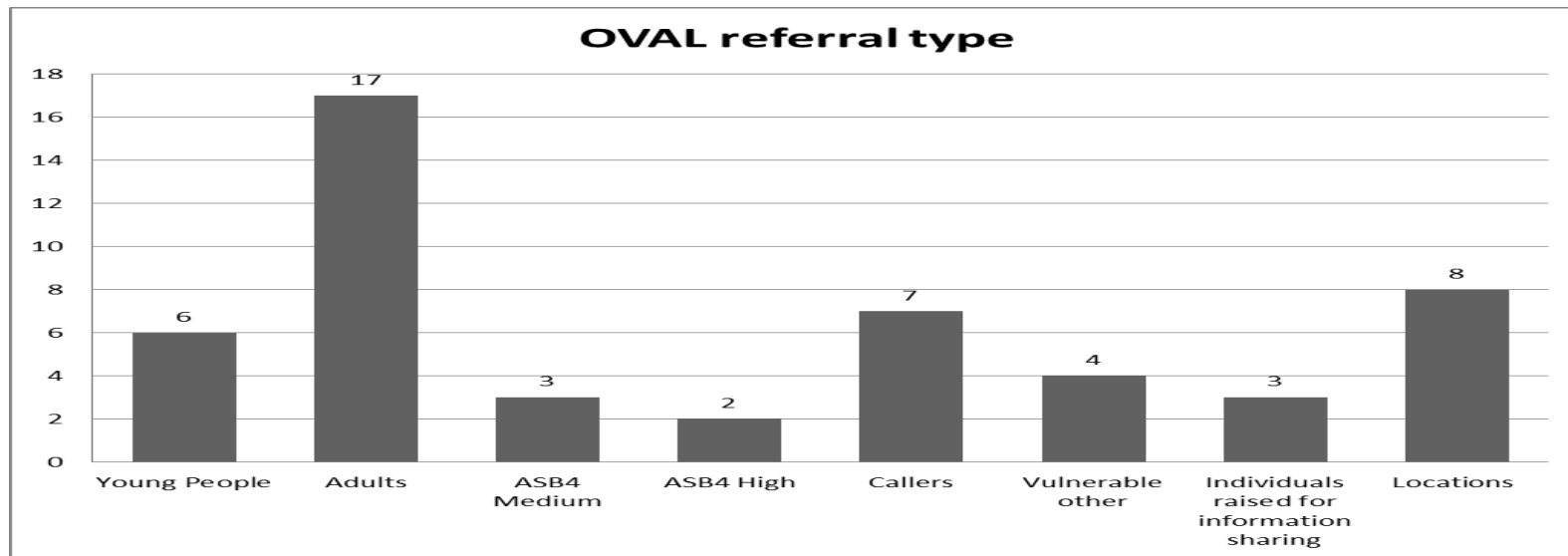
- OVAL- Monthly meeting launched to discuss Offenders, Victims and locations linked to anti social behaviour within the Winchester district. Meetings are held once a month and are attended by partner agencies.

¹² IOM – Hants & Isle of Wight Community Rehabilitation Company (HOIW CRC) manage the IOM offenders.

The OVAL group focuses on Victims of ASB which includes those where the neighbourhood police teams have completed an ASB4 (a series of questions completed with the victim to ascertain the level of vulnerability / repeat risk). The group continues to evolve so that it can reflect the requirements of professionals, the changes in structure within partner organisations and the implementation of the new powers available within the ASB legislation.¹³

New Referrals

There have been 56 Anti Social Behaviour online report forms received during the reporting period. 32 of these relate to the rural, 21 the city, 2 were of unknown location and 1 blank form.



- Of the 8 Locations raised at OVAL for action planning 1 of these is the ongoing partnership operation, Operation Helicon.
- Operation Helicon – 3 conducted (others will be undertaken as required).¹⁴

¹³ Community Trigger (Anti Social Behaviour, Crime and Policing Act 2014) – provides victims and communities the right to request a review of their cases and bring agencies together to take a joined up, problem solving approach to try and find a solution.

¹⁴ Operation Helicon - Following each operation a case conference is held to review the housing and support options available to those individuals located during the operation.

Other partnership activity aimed at tackling ASB

- 1 Criminal Behaviour Order¹⁵ gained by police.
- 1 ABC offered to an adult, although declined to sign (which led to CBO).
- Liaised with the Street Pastors in relation to the identification of locations for early evening patrols¹⁶.
- Attended school with PCSO and discussed anti social behaviour with a group of male pupils whose behaviour within the school was of concern: bullying, sexualised comments, lack of respect to other pupils and staff.
- 4 Warning letters sent.
- 2 cases flagged with Supporting Families Programme.
- 4 cases flagged with YCP.

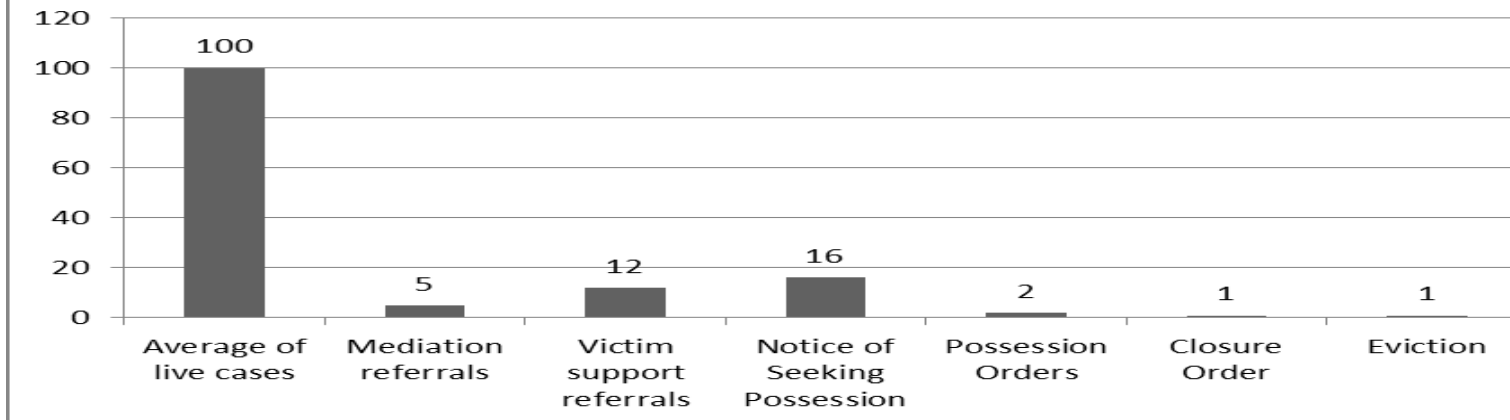
WCC Housing

- Housing Landlord Services manage their tenants in terms of Anti-Social Behaviour. The following enforcement activity has been undertaken within the reporting period:

¹⁵ Criminal Behaviour Order – A Criminal Behaviour Order (CBO) is applied for by the police on conviction of any criminal offence. Winchester was one of the first in Hampshire to achieve a CBO arising out of the Anti-Social Behaviour, Crime & Policing Act 2014.

¹⁶ The Street Pastor scheme launched extra patrolling hours in June 2015 to cover the earlier part of the evening to engage with young people.

Enforcement activity addressing Anti Social Behaviour



- The Housing Options team work closely with the CSP in relation to Women fleeing Domestic Violence and those who are street homeless. This work is largely based around move on accommodation for those leaving the Refuge and reconnecting street homeless individuals who don't have a local connection back to their area of origin.

Winchester Military Garrison

- Our work in this area continues as described; we continue to educate our personnel and demand the highest standards of behaviour. Where standards of behaviour have fallen short of that expected of Service Personnel, action will be taken e.g. a small number of Service Personnel have been dismissed from Her Majesty's Armed Forces for failing to meet the standards required. We continue to engage other stakeholders where required.

Target Outcomes: Community Impact – Offending behaviour and rural issues

Offending behaviour can have far reaching consequences that impact on large sections of the community and in extreme cases this might be whole communities. Taking this into account the CSP tries to promote partnership activity that considers the impact that an individual or individuals actions can have on those around them.

Outcomes Achieved:

Hampshire Constabulary

Undertake specific research and analysis which identifies repeat victims of rural crime¹⁷

- We will work with the Country watch team as well on specific issues.
- Continue to put in place partnership operations aimed at targeting Rural Crime activity, this will be based on seasonal trends e.g. plant theft, vehicle crime and non dwelling burglaries
- Develop a response plan which delivers against this seasons poaching activity¹⁸
- Continue to support and encourage the further development of watch groups¹⁹.

Integrated Offender Management (IOM)

- Deliver the sentence of the court through individual plans and objectives aimed at reducing the risk to the public and impact on victims.
- Work with all prisoners from point of entry to custody through to release engaging with prison staff and offenders around completion of offending behaviour work and safe plans for release into the community on licence taking into account the impact of release on victims and the local community. Police will be consulted prior to release to gain their views on any suggested licence conditions which might better protect the community.
- Implement a resettlement plan for those subject to custody and deliver ongoing supervision following release from prison sentences
- Deliver probation services through an outreach approach meeting service users in their homes, local partnerships and local reporting centres within the Winchester area to ensure that we are aware of and responding to their local environment.
- Continue to encourage offenders on supervision to build positive engagement within the Winchester community through referrals and signposting.

¹⁷ Rural Crime – the definition of a Rural Crime is any crime that occurs in a rural location e.g. this can mean the Co-op in the High Street in Wickham which has also been identified as a repeat victim. However, for the purpose of this report the police have explained the process for dealing with repeat locations which have an impact on an individual and/or their personal business for example repeat location for Plant theft, or criminal damage to crops or poaching locations. The Force prepares a Research and Analysis document that identifies such locations. The local police will then work with the victim and the Crime Prevention Advisor to provide practical help and advice on how to make their premises more secure.

¹⁸ Poaching Activity - Specific activity was planned over this year's poaching season to address the issues associated with poaching, identify offenders and progress through the criminal justice system. The police conducted 4 nights of activity over a number of weeks, where officers across Winchester and East Hants conducted patrols in repeat locations. They also had the assistance of some Special Constabulary colleagues. The information and intelligence will be used to build on this activity into next year.

¹⁹ Neighbourhood Watch – the police have a strong working relationship with Neighbourhood Watch and will continue to build on this.

- Continue to provide a service to all geographical areas covered by Winchester CSP including access to local Supervision and Community Payback services which benefit the areas where offending has occurred.
- Probation staff will continue to provide a bespoke service to female offenders subject to probation orders or licences through one to one and group work programmes

Conclusion

Winchester CSP endeavours to work collaboratively at every opportunity. Building on the existing arrangements we will continue to engage with other partnerships within the district and across local authority boundaries when it's mutually beneficial²⁰.

Partner agencies are still face challenging times ahead and this means that on a practical level we will need to continue to deliver against the targets within this plan, using existing resources wherever possible.

Throughout the rest of 2015/16 the CSP will:

- Deliver against the priority actions within this Delivery Plan
- Continue to support the Police and Crime Commissioner in the delivery of his Police and Crime Plan.
- Oversee the delivery of the Prevent duty
- Actively participate in the Supporting Families project
- Discharge Community Safety related legislation as directed by Government e.g. Prevent, Modern Slavery Act 2015, ASB, Police & Crime Act 2014.

The CSP continues to achieve successful outcomes as shown in the 2016/17 Strategic Assessment. However, the partnership is mindful that there is still a lot of work to be done and that it is important to deliver a community safety service that responds to local need, supports those who are vulnerable to risk and pursues those who are the most prolific in their crime and disorder.

²⁰ Working across boundaries – in the investigation of fly Tip, the WCC Neighbourhood Service Officer (Enforcement) continues to work in collaboration with 3 different authorities in order to put in place the case for prosecution.

Winchester District – Serious Acquisitive Crime²¹

Latest Refresh Date 09/11/2016

For the date range 01/11/2015 00:00:00 - 31/10/2016 23:59:59

			WINCHESTER CITY			WINCHESTER GREATER						WINCHESTER RURAL				TOTAL
			WINCHESTER CENTRAL	WINCHESTER NORTH	WINCHESTER SOUTH	BISHOPS WALTHAM AND SOBERTON	DENMEAD AND SOUTHWICK	OWSLEBURY AND CURBRIDGE	WEST MEON AND HAMBLEDON	WICKHAM AND WHITELEY	WINCHESTER GREATER	WINCHESTER RURAL	WINCHESTER RURAL EAST	WINCHESTER RURAL NORTH	WINCHESTER RURAL WEST	
ROBBERY	ROBBERY BUSINESS	34/11	1	0	0	0	0	0	0	0	0	1	0	0	0	2
	ROBBERY PERSONAL	34/21	6	6	3	1	0	0	0	0	0	1	1	0	0	18
BURGLARY IN A DWELLING	AGGRAVATED BURGLARY IN A DWELLING	29	1	0	0	0	0	0	0	0	0	0	0	0	0	1
	DWELLING BURGLARY	28/3	29	21	13	13	12	12	8	10	13	0	9	9	8	144
	HOUSE BURGLARY: BURGLARY IN A DWELLING	28/1	0	0	0	0	0	0	0	0	0	0	0	0	0	0
VEHICLE OFFENCES	AGGRAVATED THEFT OF A MOTOR VEHICLE	37/2	0	0	0	0	1	0	0	0	0	0	0	0	0	1
	AGGRAVATED TWOC (CRIMINAL DAMAGE ONLY)	131/1	0	0	0	0	1	0	0	2	0	0	1	0	0	4
	THEFT FROM MOTOR VEHICLE	45/10	105	29	38	14	19	24	15	14	0	6	16	13	21	314
	THEFT OF A MOTOR VEHICLE	48/1	4	0	1	7	2	3	3	2	0	0	4	4	0	30
	TWOC (THEFT OF A MOTOR VEHICLE)	130/1	6	0	2	1	2	4	1	1	0	0	0	1	0	18
Total			152	56	57	36	37	43	27	29	0	8	31	27	29	532

For the date range 01/11/2014 00:00:00 - 31/10/2015 23:59:59

			WINCHESTER CITY			WINCHESTER GREATER						WINCHESTER RURAL				TOTAL
			WINCHESTER CENTRAL	WINCHESTER NORTH	WINCHESTER SOUTH	BISHOPS WALTHAM AND SOBERTON	DENMEAD AND SOUTHWICK	OWSLEBURY AND CURBRIDGE	WEST MEON AND HAMBLEDON	WICKHAM AND WHITELEY	WINCHESTER GREATER	WINCHESTER RURAL	WINCHESTER RURAL EAST	WINCHESTER RURAL NORTH	WINCHESTER RURAL WEST	
ROBBERY	ROBBERY BUSINESS	34/11	1	0	0	0	0	0	0	0	0	0	0	0	0	1
	ROBBERY PERSONAL	34/21	21	6	0	0	0	0	0	3	0	0	2	0	2	34
BURGLARY IN A DWELLING	AGGRAVATED BURGLARY IN A DWELLING	29	1	1	1	0	0	0	0	0	0	0	0	0	0	3
	DWELLING BURGLARY	28/3	45	21	11	16	10	6	5	6	0	0	6	4	17	147
	HOUSE BURGLARY: BURGLARY IN A DWELLING	28/1	0	1	0	0	0	0	0	0	0	0	0	0	0	1
VEHICLE OFFENCES	AGGRAVATED THEFT OF A MOTOR VEHICLE	37/2	0	0	0	1	0	0	1	0	0	0	0	0	0	2
	AGGRAVATED TWOC (CRIMINAL DAMAGE ONLY)	131/1	0	1	1	0	1	0	0	0	0	1	0	0	1	5
	THEFT FROM MOTOR VEHICLE	45/10	29	13	10	17	5	21	8	33	0	4	25	20	26	211
	THEFT OF A MOTOR VEHICLE	48/1	3	1	0	1	0	4	0	6	0	0	2	1	1	19
	TWOC (THEFT OF A MOTOR VEHICLE)	130/1	0	2	0	4	2	4	0	0	0	2	3	1	2	20
Total			100	46	23	39	18	35	14	48	0	7	38	26	49	443

²¹ You will see increased levels of crime across the board, due in the main to increased scrutiny of the accuracy of recording, as part of the police's crime data integrity program (CDI), rather than greater criminal activity. The CDI program commenced towards the end of 2014 and it remains a Force priority to improve crime recording. The impact of this work continues to be seen across the Force and is having a particular impact on violent crime and public order and consequently, total crime.

Winchester District – Serious Aquisitive Crime

Latest Refresh Date **09/11/2016**

		01/11/2015 - 31/10/2016				01/11/2014 - 31/10/2015			
		Sector				Sector			
		WINCHESTER CITY	WINCHESTER GREATER	WINCHESTER RURAL	TOTAL	WINCHESTER CITY	WINCHESTER GREATER	WINCHESTER RURAL	TOTAL
ROBBERY	ROBBERY BUSINESS	1	0	1	2	1	0	0	1
	ROBBERY PERSONAL	15	1	2	18	27	3	4	34
BURGLARY IN A DWELLING	AGGRAVATED BURGLARY IN A DWELLING	1	0	0	1	3	0	0	3
	DWELLING BURGLARY	63	55	26	144	77	43	27	147
	HOUSE BURGLARY: BURGLARY IN A DWELLING	0	0	0	0	1	0	0	1
VEHICLE OFFENCES	AGGRAVATED THEFT OF A MOTOR VEHICLE	0	1	0	1	0	2	0	2
	AGGRAVATED TWOC (CRIMINAL DAMAGE ONLY)	0	3	1	4	2	1	2	5
	THEFT FROM MOTOR VEHICLE	172	86	56	314	52	84	75	211
	THEFT OF A MOTOR VEHICLE	5	17	8	30	4	11	4	19
	TWOC (THEFT OF A MOTOR VEHICLE)	8	9	1	18	2	10	8	20
		265	172	95	532	169	154	120	443

Winchester District – Rural Crime²²

Latest Refresh Date 09/11/2016

For the date range 01/11/2015 00:00:00 - 31/10/2016 23:59:59

	WINCHESTER GREATER					WINCHESTER RURAL			TOTAL
	BISHOPS WALTHAM AND SOBERTON	DENMEAD AND SOUTHWICK	OWSLEBURY AND CURBRIDGE	WEST MEON AND HAMBLEDON	WICKHAM AND WHITELEY	WINCHESTER RURAL EAST	WINCHESTER RURAL NORTH	WINCHESTER RURAL WEST	
1 Violence Against the Person	50	31	111	53	106	78	92	72	593
2 Sexual Offences	4	3	14	6	11	15	9	6	68
3 Robbery	1	0	0	0	0	1	0	0	2
4 Theft Offences	61	45	191	92	154	289	92	105	1029
5 Criminal Damage and Arson Offences	36	10	59	33	33	70	29	30	300
6 Drug Offences	1	1	1	4	6	136	6	20	175
7 Possession of Weapons Offences	3	1	2	0	2	6	1	1	16
8 Public Order Offences	17	7	35	14	23	20	20	22	158
9 Miscellaneous Crimes Against Society	6	2	8	10	6	5	8	5	50
Total	179	100	421	212	341	620	257	261	2391

For the date range 01/11/2014 00:00:00 - 31/10/2015 23:59:59

	WINCHESTER GREATER					WINCHESTER RURAL			TOTAL
	BISHOPS WALTHAM AND SOBERTON	DENMEAD AND SOUTHWICK	OWSLEBURY AND CURBRIDGE	WEST MEON AND HAMBLEDON	WICKHAM AND WHITELEY	WINCHESTER RURAL EAST	WINCHESTER RURAL NORTH	WINCHESTER RURAL WEST	
1 Violence Against the Person	34	16	107	27	80	88	69	29	450
2 Sexual Offences	5	2	9	6	6	10	9	8	55
3 Robbery	0	0	0	0	2	2	0	2	6
4 Theft Offences	48	30	208	52	185	326	91	139	1079
5 Criminal Damage and Arson Offences	33	7	60	35	35	51	38	18	277
6 Drug Offences	1	4	8	1	7	237	11	13	282
7 Possession of Weapons Offences	0	2	2	0	1	5	0	1	11
8 Public Order Offences	17	6	28	10	24	20	11	8	124
9 Miscellaneous Crimes Against Society	7	0	11	2	5	5	3	2	35
Total	145	67	433	133	345	744	232	220	2319

²² The rural flag is based on geography, so if a beat is defined as rural, all of its crime will be classed as rural, irrespective of the nature of the crime.

Winchester District – Domestic Incidents and Crimes²³

DataMart Refresh

09/11/2016

For date period between 01/11/2015 00:00:00 and 31/10/2016 23:59:59

	WINCHESTER CITY			WINCHESTER GREATER						WINCHESTER RURAL				TOTAL
	WINCHESTER CENTRAL	WINCHESTER NORTH	WINCHESTER SOUTH	BISHOPS WALTHAM AND SOBERTON	DENMEAD AND SOUTHWICK	OWSLEBURY AND CURBRIDGE	WEST MEON AND HAMBLEDON	WICKHAM AND WHITELEY	WINCHESTER GREATER	WINCHESTER RURAL	WINCHESTER RURAL EAST	WINCHESTER RURAL NORTH	WINCHESTER RURAL WEST	
All Domestic Incidents (incl Crime)	456	115	166	93	82	78	28	88	1	2	51	55	45	1260
All Domestic Crimes	217	60	92	52	42	45	17	55	0	2	27	30	21	660

For date period between 01/11/2014 00:00:00 and 31/10/2015 23:59:59

	WINCHESTER CITY			WINCHESTER GREATER						WINCHESTER RURAL				TOTAL
	WINCHESTER CENTRAL	WINCHESTER NORTH	WINCHESTER SOUTH	BISHOPS WALTHAM AND SOBERTON	DENMEAD AND SOUTHWICK	OWSLEBURY AND CURBRIDGE	WEST MEON AND HAMBLEDON	WICKHAM AND WHITELEY	WINCHESTER GREATER	WINCHESTER RURAL	WINCHESTER RURAL EAST	WINCHESTER RURAL NORTH	WINCHESTER RURAL WEST	
All Domestic Incidents (incl Crime)	276	105	145	96	71	81	14	60	0	6	55	73	21	1003
All Domestic Crimes	121	47	62	45	37	40	6	22	0	5	22	36	9	452

²³ The domestic incident figures include those that go on to be validated as a domestic crime; the domestic crime figures are therefore a sub-set of the incidents.